

120/208V, 3φ, 4W, 10 KAIC, PANELBOARD, RECESSED, NEMA 1											150AT/225AF		A	
SOLID NEUTRAL, GROUND BUS, MAIN BREAKER														
P.	DESCRIPTION	BKR.	#	W.	GND.	CND.	KVA	ΦA	ΦB	ΦC	DESCRIPTION	P.		
1	LIGHTING	20	1	#2	#2	1/2"	1.5	ΦA	ΦB	ΦC	RECEPTACLES	2		
3												4		
5							1.0					6		
7							1.2					8		
9							1.6					10		
11							0.3					12		
13							1.2					14		
15							1.6					16		
17							1.5					18		
19							1.2					20		
21							0.3					22		
23	(BOLLARDS)					3/4"	1.2					24		
25	COPIER					1/2"	1.5					26		
27	RECEPTACLES (EWO)						0.5					28		
29	REFRIGERATOR						0.5					30		
31	KITCHEN RECEPTACLES						0.5				FACP	32		
33	BATHROOM RECEPTACLES						1.0				SOUND SYSTEM	34		
35	BATHROOM RECEPTACLES						1.0				CENTRAL COMPUTER	36		
37	CORRIDOR RECEPTACLES						1.8				SPARE	38		
39	COUNCIL ROOM						1.3				WATER HEATER	40		
41	EXHAUST FAN						2.3					42		
CONN. KVA		LOAD		DF		DEM. KVA		PROVIDE 1-1/2" C. SPARE STUBBED ABOVE CEILING IN ACCESSIBLE LOCATION						
ΦA		14.7												
ΦB		14.2												
ΦC		12.7												
TOTAL		41.6												

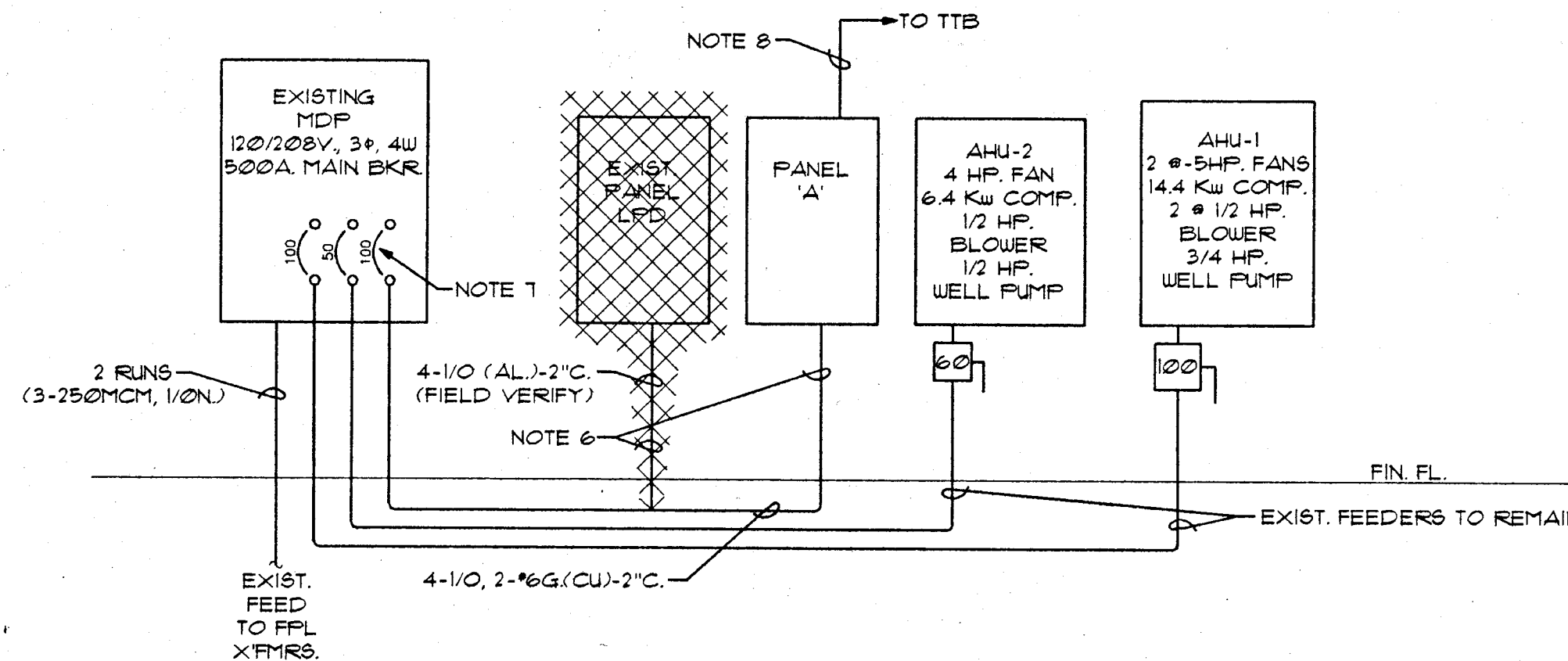
**LEGEND**

- 2x4 RECESSED FLUORESCENT, HALF-SHADED SYMBOL INDICATES FIXTURE SUPPLIED WITH 90 MIN. EMERGENCY BATTERY.
- GROUND MOUNTED BOLLARD
- RECESSED, INCANDESCENT OR PL, SHADED CIRCLE DENOTES FIXTURE SUPPLIED WITH 90 MIN. EMERGENCY BATTERY.
- EXIT SIGN, FACES INDICATED BY SHADING, ARROWS AS INDICATED.
- RECESSED FLUORESCENT, HALF-SHADED SYMBOL INDICATES FIXTURE SUPPLIED WITH 90 MIN. EMERGENCY BATTERY.
- SURFACE MTD. OR SUSPENDED FLUORESCENT
- TRACK LIGHTING, NO. OF FIXTURES AND LENGTH OF TRACK AS INDICATED.
- SPECIFICATION GRADE, 125/211V, SWITCH, 20A, 42" AFF  
D = DIMMER WITH LAMP DEBUZZING COIL (SIZED FOR LOAD)  
LD = LOW-VOLTAGE DIMMER (SIZED FOR LOAD), LOWER CASE LETTERS DENOTE SWITCHING, M = MANUAL MOTOR STARTER
- SPECIFICATION GRADE, 125/211V, DUPLEX RECEPTACLE, 20A, 18" AFF, SHADED CENTER DENOTES MOUNTED ABOVE COUNTER, GFI = GROUND FAULT INTERRUPTER
- COMBINATION SWITCH AND DUPLEX RECEPTACLE, 42" AFF.
- TELEPHONE/DATA OUTLET WITH COVERPLATE, PROVIDE 2-3/4" C. STUBBED ABOVE CEILING IN ACCESSIBLE LOCATION, 18" AFF.
- FIRE ALARM FULL STATION
- FIRE ALARM STROBE/HORN
- FIRE ALARM CONTROL PANEL (FACP), 4 ZONES  
ZONE 1 (SMOKE DETECTOR, FULL STATIONS), ZONE 2 (DUCT DETECTION) ZONES 3, 4 (SPARE)
- IONIZATION SMOKE DETECTOR
- IONIZATION DUCT DETECTOR, RETURN
- FIRE ALARM STROBE
- RECESSED CEILING SPEAKER, 1/4 = SPEAKER TAPPED AT 1/4 POWER OF OTHER SPEAKERS.
- MICROPHONE OUTLET MOUNTED IN DAIS WALL.
- MICROPHONE OUTLET MOUNTED IN DAIS FLOOR FOR DESK MICROPHONES, NOTE 1.
- DISCONNECT SWITCH, F = FUSED, N = NON-FUSED.
- DENOTES CONCEALED WIRING (WIRE AND CONDUIT), TIC MARKS INDICATE NO. OF WIRES AND NEUTRAL, SEE PANEL SCHEDULE FOR SIZES.
- PUBLIC ADDRESS AMPLIFIER & EQUALIZER, 60" AFF
- SPEAKER VOLUME CONTROL
- VARIABLE AUDIO TRANSFORMER FOR AIL
- CABLE TV 3/4" EMPTY CONDUIT, PROVIDE TO STORAGE ROOM BESIDE MEETING ROOM FOR FUTURE VCR/TV CONNECTION.

LIGHTING FIXTURE SCHEDULE				
SYMBOL	MANUFACTURER	LAMPS	MOUNTING	REMARKS
A	DAY-BRITE CG242-CFA34D-E9B	2-F40/CW	GRID	120V, 2x4 RECESSED STATIC FLUORESCENT 1-1/2"x1-1/2"x1" SILVER PARACUBE 11 LOUVER
B	DAY-BRITE CG242-CFA34D-E9B	3-F40/CW	GRID	120V.
C	DAY-BRITE CG244-CFA34D-E9B	4-F40/CW	GRID	120V.
D	DAY-BRITE CG142-C34D-E9B	2-F40/CW	GRID	120V, 1x4' FLUORESCENT
E	CAFRI FLO17/120HFF-T162	2-FL13/35K	RECESSED	120V, 10" DOWNLIGHT, CLEAR SPECULAR REFLECTOR
F	DAY-BRITE CG242-CFA12D-E9B	2-F40/CW	GRID	120V, 125" THICK LENSE
G	DAY-BRITE 4NR-E9B	2-F40/CW	SUSPENDED	120V, 4' INDUSTRIAL
H	I.C.E. FBLK-WJIII-230/240 STAG-6A-XXX-120V-E9B	2-F40/CW PROVIDE 3' OR 4' LENGTH	FLANGED	120V, CONTINUOUS PERIMETER WALL-WASH LIGHTING, PROVIDE 3' OR 4' LENGTH FIXTURES TO ACCOMPLISH WALL-WALL LIGHT.
J	CAFRI LOT-R12	1-FL13/35K	RECESSED	120V, 6" LENSED DOWNLIGHT
K	CAFRI KR21-F-KF50T5 KT2-P, KT8-P	1-50W/PAR 36	SURFACE	120V, SUPPLY, LOW VOLTAGE LAMPS, TRAK LIGHTING, NO. OF FIXTURES AS INDICATED
L	CAFRI ADLX-10	1-150W/PAR 38	RECESSED	120V, 10" ADJUSTABLE DOWNLIGHT
M	EMERGI-LITE FL-W-FNXX-R	2-PL1	UNIVERSAL	120V, EXIT LIGHT, SELF POWERED, FACES AND ARROWS AS INDICATED, THERMOPLASTIC
N				SEE ARCHITECTURAL DRAWINGS FOR FIXTURE, GROUND MOUNTED BOLLARD, 120V.
P	I.C.E. LW-240 (230)-D/MW-E9B	2-F40/CW PER 3' OR 4' LENGTH	GRID	120V, CONTINUOUS PERIMETER LIGHTING SYSTEM, TO PROVIDE WALL TO WALL LIGHTING, NOT WALL-WASH, PROVIDE 3' OR 4' LENGTH FIXTURES.

**ELECTRICAL NOTES:**

1. PROVIDE MICROPHONE CABLE ACCESS OUTLET THRU DAIS FLOOR, EVENLY SPACE OUTLETS UNDER TABLE. PROVIDE MICROPHONE CABLE LONG ENOUGH TO REACH TOP OF GOOSENECK MOUNTED ON TABLE. PROVIDE GOOSENECK EXTENSION MOUNTED INTO TOP OF DESK AT EACH OUTLET LOCATION, ONLY GOOSENECK TO SHOW ABOVE DESK. PROVIDE TERMINATION TO MICROPHONE CABLE SUITABLE FOR CONNECTION TO COUNCIL SUPPLIED MICROPHONES.
2. CONDUIT SERVING TYPE 'L' DIMMED LIGHTS SHALL BE GALVANIZED RIGID STEEL AND SHALL BE SOLIDLY GROUNDING WITH GROUNDING BUSHINGS.
3. PROVIDE TIME SWITCH FOR EXHAUST FAN, TORK TW-220L OR EQUAL, T-DAY, MANUAL BY-PASS, RESERVE POWER SPRING.
4. PROVIDE PHOTOCELL TO CONTROL BOLLARD LIGHTING CIRCUIT A-23. MOUNT FLUSH IN WALL IN RAINTIGHT BOX.
5. PROVIDE HOMERUN FROM BOLLARDS THRU EXISTING GRASSSED AREA (TO BE CONCRETE SIDEWALK) TO PUMP ROOM. PROVIDE UNDER AND THRU FLOOR SLAB TO MEETING ROOM CHASE (SEE FLAN).
6. SAWCUT AND DEMOLISH A TRENCH IN EXISTING FLOOR SLAB FROM EXISTING PANELBOARD LOCATION TO NEW PANELBOARD 'A' LOCATION. REMOVE EXISTING FEEDER. DEMOLISH EXISTING CONDUIT DOWN UNDER FLOOR SLAB. PROVIDE PVC 80 CONDUIT FROM NEW TURN INTO TRENCH UP TO PANEL 'A'. PATCH CONCRETE TO MATCH EXISTING.
7. REPLACE EXISTING 100A/3P BREAKER WITH NEW 150A/3P BREAKER. KAIC RATING OF NEW BREAKER TO MATCH MAIN BREAKER.
8. PROVIDE #6G, IN 3/4" C. TO TT8, BOND TO SPARE #6G, IN PANEL 'A'. TIE TO GROUND BUS IN TDF.
9. PROVIDE FIRE ALARM SYSTEM WITH EQUIPMENT INDICATED BY PLANS AND REQUIREMENTS OF SYSTEM AS INDICATED IN SPEC'S. ABOVE CEILING CONTAINS RETURN AIR FLENUM, WIRING SHALL BE IN CONDUIT OR FLENUM RATED.
10. PROVIDE SOUND SYSTEM WITH EQUIPMENT INDICATED BY PLANS AND REQUIREMENTS OF SYSTEM AS INDICATED IN SPEC'S. ABOVE CEILING CONTAINS RETURN AIR FLENUM, WIRING SHALL BE IN CONDUIT OR FLENUM RATED.
11. PROVIDE 2-1" C. FROM AMPLIFIER CONCEALED IN WALL AND UNDER DAIS TO CONTROL EQUIPMENT LOCATION. PROVIDE OUTLETS IN DAIS WALL WITH COVERPLATES.
12. PROVIDE PRE-AMPLIFIER CONTROLS & SPEAKER VOLUME CONTROL SUCH THAT ACCESS IS THRU TOP OF COUNCIL TABLE. SEE ARCHITECTURAL DRAWINGS FOR MOUNTING ARRANGEMENTS.
13. PROVIDE 2-2" C. IN WALL STUBBED ABOVE CEILING FROM ACCESS BOX (MIN. 12"x12"x4"D.) WITH COVERPLATE FOR FUTURE COMPUTER WIRING.



**SINGLE LINE DIAGRAM**

N.T.S.

**GARDNER, GRIFFITH & ASSOCIATES, INC.**  
CONSULTING ENGINEERS

874 DIXON BOULEVARD COCOA, FLORIDA 32922  
(407) 636-0274 FAX (407) 639-8886

spacecoast architects p.a.  
106 n. oakledge drive  
rockledge, fl. 32955  
(407)242-8517

ELECTRICAL NOTES & SCHEDULES  
SATELLITE BEACH CITY HALL  
SATELLITE BEACH, FLORIDA

- △
- △
- △
- △
- △

project no.

drawn by  
**W.R.K.**

checked by  
**G.Z.**

date  
**11-13-91**

**E-2**